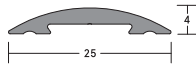
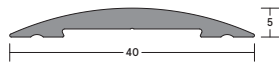


LAS4001, LAS4002 THRESHOLD PLATES

FITTING GUIDE



LAS4001



LAS4002



LENGTH _____

CONTENTS

- LAS4001 or LAS4002 threshold plate
- Stainless steel screws and plugs

TOOLS REQUIRED

- Tape measure
- Pencil or marker
- Saw, hand or power
- Power drill
- 4.5mm drill bit
- 6mm masonry bit
- Countersink
- Construction adhesive

For more information please call:

+9714 883 7206

INSTALLATION DETAIL

STEP 1

Remove the plate from the packaging and measure the door width, between jambs or door stops to determine plate length required.

STEP 2

Measure the threshold plate and mark the desired length (and profile if cutting around the door stop) with a pencil. Cut the threshold plate using a saw.

STEP 3

Position the plate on the door sill in required location.

STEP 4: SCREW FIX

Using a power drill with a 4.5mm drill bit, create fixing holes in the plate at the required positions, countersink to ensure flush screw heads. With the plate in position, mark hole centres on floor.

Using masonry drill, create fixing holes. Clean away dust and insert supplied plastic plugs.

Screw fix the threshold in place using the screws & plugs supplied.

STEP 4: ADHESIVE FIX

Apply adhesive to the back of the threshold plate and place it in the desired position.

NOTE

For exterior applications where threshold plate meets the door stop, sealant should be applied to prevent water ingress.

STEP 5

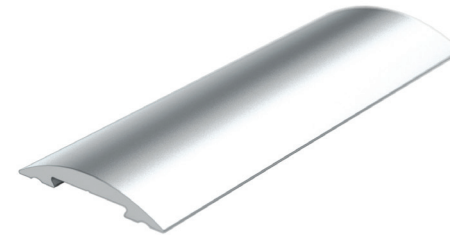
Check to ensure the door opens and closes freely.

NOTE

For effective operation, the LAS4001 and LAS4002 threshold plates require a minimum of 6mm clearance between the door and the floor.

NOTE

Ensure that the installation of this product does not impede the opening or closing of the door. It is recommended to check the door periodically to ensure the door closes and latches properly.



NOTE

Recommendations as to methods, use of materials and construction details are based on the experience and knowledge of Lorient and are given in good faith as a general guide and service to designers, contractors and manufacturers.

Lorient reserves the right to make alterations or delete any installation detail without prior notice.



Gasketing materials for fire doors intended for application to wood and plastic covered composite and wood core doors rated up to 1.5 hours and listed steel frames and/or classified steel covered composite, hollow metal doors rated up to 3 hours.

V1



Lorient Gulf Building
Materials Trading LLC
PO Box 127987
Dubai, UAE

+9714 883 7206
www.lorientgulf.ae

All rights reserved. No part of this fitting guide may be reproduced, stored in a retrieval system, or transmitted in any means, electronic, mechanical, photocopying, recording or otherwise without the written permission of Lorient Polyproducts Limited.
© Lorient Polyproducts Ltd 2019